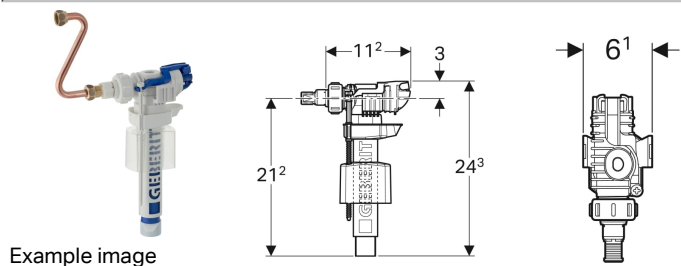


Geberit fill valve type 380, lateral water supply connection, 3/8", nipple made of brass



Application purposes

- For Geberit concealed cisterns
- For greywater (rainwater) with pH value 6.0–9.5, if a filter system is used
- For potable water

Characteristics

- Adjustable filling height
- Threaded nipple made of brass
- Water supply connection on the left/right
- Low-noise in accordance with tap group I (DIN 4109)

Technical data

Flow pressure	0.1-10 bar
Line noise at 3 bar	12 dB(A)
Line noise at 5 bar	18 dB(A)
Maximum storage temperature	40 °C
Maximum operating temperature, water	25 °C
Calculated flow rate	0.11 l/s
Minimum flow pressure for calculated flow rate	0.5 bar

Scope of delivery

- Adapter for nipple, for fill valve type 350
- Cone screw fitting
- Connection pipe made of copper

Art. no.	B	H	T
240.705.00.1	6.1 cm	24.3 cm	11.2 cm